



कर्नाटक केन्द्रीय विश्वविद्यालय कर्नाटक केन्द्रिय विश्वविद्यालय

Central University of Karnataka
(Established by an Act of the Parliament in 2009)
Aland Road, Kadaganchi, Kalaburgi-585 367, Karnataka

7.3 Institutional Distinctiveness

7.3.1 -Portray the performance of the Institution in one area distinctive to its priority and thrust within 1000 words

Enhancing biodiversity and establishing energy self-sufficient campus:

The CUK campus is spread over 654 acres and hosts good fauna, flora unique to semi-arid region and several seasonal water bodies. Thus, preserving and enriching the biodiversity for providing healthy environment to all its residents has been not only a distinctive but natural priority to CUK administration.

Additionally, being in tropical semi-arid zone, the campus has unique floristic and faunal elements. Mapping and putting in place a sustainable strategy for conserving and enhancing them would provide a unique opportunity for creating a biozone which can act as a repertoire of region's biodiversity.

Further, the university is also committed to provide a clean campus in terms water and air to all its residents and become self-sufficient using renewable energy sources.

The following milestones have been achieved over the last five years in this regard:

- 1. Inventorization of Flora and Fauna:** The university carried out detailed inventorization of the flora and fauna on its campus with the help of taxonomists. Approximately 161 plants and 61 animal species belonging to different taxa been identified and documented. A photographic catalogue on campus biodiversity is being prepared. List of flora and fauna** is given in the end.
- 2. Plantation drives:** Extensive plantation have been carried out keeping in mind floral and faunal enrichment. Accordingly, following plantation drives have been carried out with the help of forest department and NGOs.
 - 1800 fruit trees of 9 varieties in 50 acres of land.
 - 1600 timber tree plantations
 - Several Medicinal plants.

An **adopt a tree** scheme is being launched among the faculty and students to promote green-concerns and afforestation measures. Ceremonial plantations have also been carried out during visits of dignitaries. Saplings are being provided as memento in the university programs. Overall, these initiatives is creating considerable awareness on biodiversity conservation among all its stakeholders.



कुलसचिव / REGISTRAR
कर्नाटक केन्द्रीय विश्वविद्यालय
Central University of Karnataka
कलबुर्गी / KALABURAGI

3. **Battery operated vehicles:** To minimize the air pollution, battery operated vehicles are being used for shuttling within the campus. There are two such vehicles currently in use. Efforts are on to increase their number, and reduce petrol/diesels run vehicles. This is contributing towards clean air in the campus.
4. **Solar Park, biofuel unit for harvesting/generating the energy:** The university is committed to becoming energy self-sufficient in a time bound manner. Thus, it has established a solar park and installed several roof-top solar panels on buildings including residential buildings. Currently, the requirements of energy in university are partially met by these installations. The university is further planning to increase their number in due course to become self-sufficient in terms of its energy needs.

To augment this further, the university has also established a biofuel generation plant on the campus in a two-acre area. This contains state of the art facilities for demonstration and extraction of biofuels from different renewal energy sources.

5. **Water conservation:** To conserve water and recharge the ground water sources, rain-water harvesting system has been effectively tapped. Several gallons of water is being annual tapped to recharge the ground water. In addition, two water treatment plants have been set-up across the campus to treat the used water. The treated water is currently being use to irrigate the plantations.
6. **Maintaining natural watery bodies:** The campus has several seasonal water bodies which attracts migratory birds. These tanks have been regularly desilted to increase the holding capacity and support minor flora and fauna around them throughout the year. It is expected to increase the population of butterflies and pollinators and thus help in enhancement of biodiversity.
7. **Waste disposal:** To provide clean and healthy environment, both dry and wet wastes are collected at a regular interval in a dedicated containers and are disposed/transported out of the campus with the help of Kalaburagi municipal corporation. Further, the use of plastics has been strongly discoursed through regular sensitization program. There is also a dedicated dumping yard for temporary storage of solid wastes.
8. **Disposal of e-waste and old/unusable items:** Proper mechanism is in place to dispose e-waste and old/unusable items that have generated over the years.

List of Flora: *Melothria scabra, Melothria pendula, Abutilon indicum, Agave angustifolia, Agave vilmoriniata, Agermone maxicana, Alternanthera sessilis, Andrographis echiodides, Boerhavia erecta, Calendula arvensis, Cassia occidentalis, Cassia sericea, Cassia sophora, Cassia tora, Clitoria ternatea, Crassula ovata, Crotalaria hebecarpa, Croton bonplandianus, Curcuma longa, Cyanthillium albicans, Cyanthillium cinereum, Cymbopogon citratus, Dactyloctenium aegyptium, Eragrostis uniolooides, Erigeron canadensis, Euphorbia hirta, Gaillardia pulchella Foug, Gomphrena globose, Heteropogon contortus, Impatiens balsamina L., Indigofera cordifolia, Indigofera linifolia, Ipomoea indica, Ipomoea obscura, Ipomoea purpurea, Malva nicaeensis, Ocimum tenuiflorum, Pennisetum pedicellatum, Pentanema indicum, Pentas lanceolata, Polygonum arenastrum, Pulicaria paludosa, Senna uniflora, Sphagnetocola trilobata, Tagetes minuta, Trachyspermum ammi,*


 कुलसचिव / REGISTRAR
 कर्नाटक केन्द्रीय विश्वविद्यालय
 Central University of Karnataka
 कलबुरगि / KALABURAGI

Tradescantia spathacea, Tribulus terrestris, Trichodesma zeylanicum, Tridax procumbens, Xanthium orientale, Xanthosoma sagittifolium, Xanthosoma violaceum, Zingiber officinale, Ipomoea quamoclit, Themeda triandra, Chrysanthemum indicum, Tradescantia pallida, Tradescantia spathacea, Tradescantia zebrina, Epipremnum aureum, Monstera ssp, Centella asiatica, Ficus recemosa, Nerium oleander, Solenostemon scutellarioides, Euphorbia milli, Kalachoe pinnata, Cryptostegia grandiflora, Cathranthus roseus, Acalypha wilkesiana, Achyranthus aspera, Aeschynomene indica, Annona squamosa, Azima tetracantha, Calotropis procera, Citrus limon, Clerodendrum chinense, Codiaeum variegatum, Codiaeum variegatum, Combretum indicum, Dracaena trifasciata, Duranta erecta, Euphorbia heterophylla, Euphorbia tithymaloides, Euphorbia tithymaloides, Hibiscus micranthus, Hibiscus phoeniceus, Murraya koenigii, Pongamia pinnata, Punica granatum, Rosa chinensis, Saccharum officinarum, Senna auriculata, Solanum lycopersicum, Solanum melongena, Solanum tuberosum, Tabernaemontana pandacaqui, Thuja occidentalis, Adenium obesum, Ipomoea carnea, Ixora coccinea, Nerium oleander, Dracaena trifasciata, Lablab purpureus, Jathropha integrifolia, Crossandra infundibuliformis, Datura innoxia, Acacia dealbata, Acacia nilotica, Anacardium occidentale, Artocarpus heterophyllus, Artocarpus heterophyllus, Azadirachta Indica, auhinia purpurea, Bougainvillea ssp, Caesalpinia pulcherrima, Carica papaya, Cascabela Thevetica, Casia, Cassia fistula, Conocarpus erectus, Cycus revoluta, Eucalyptus melliodora, Ficus benghalis, Ficus benjamina, Ficus carica, Ficus religiosa, Hedyscepe canterburyana, Hibiscus rosa-sinensis, Leucaena leucocephala, Livistona chinensis, Mangifera Indica, Manilkara Zapota, Millingtonia hortensis, Monoon longifolia, Peltophorum pterocarpum, Phoenix dactylifera, Platycladus orientalis, Psidium Guajava, Ravenala madagascariensis, Senegalia chundra, Senna multiglandulosa, Strelitziaceae, Swietenia mahagoni, Syzygium cumini, Tectona grandis, Tectona grandis, Vachellia farnesiana, Vachellia nilotica, Vachellia tortilis, Ziziphus mauritiana and Heteropogon triticeus.

Fauna: *Psittacula kramera, Dendrocitta vagabunda, Sturnus pagodarum, Dicrurus macrocercus, Turdoides striata, Pavo cristatus, Haliastur indus, Columba Livia, Spilopelia senegalensis, Cinnerys asiaticus, Halcyon smyrnensis, Copsychus saularis, Pycnonotus café Ardea Alba, Merops orientalis and Ardeola ralloides*


कुलसचिव / REGISTRAR
कर्नाटक केन्द्रीय विश्वविद्यालय
Central University of Karnataka
कलबुरगि / KALABURAGI

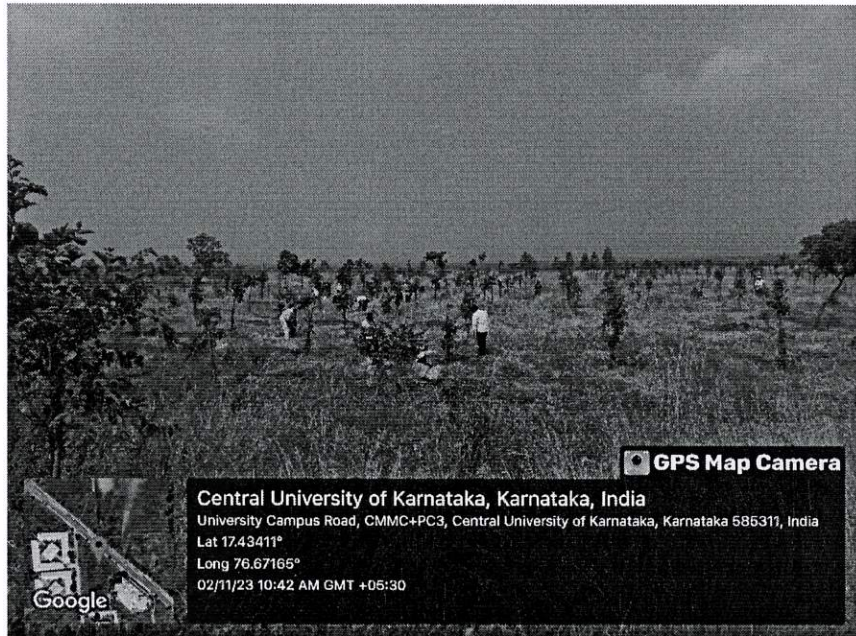
Proofs:

- **Inventorization of Flora and Fauna & Plantation drives:**



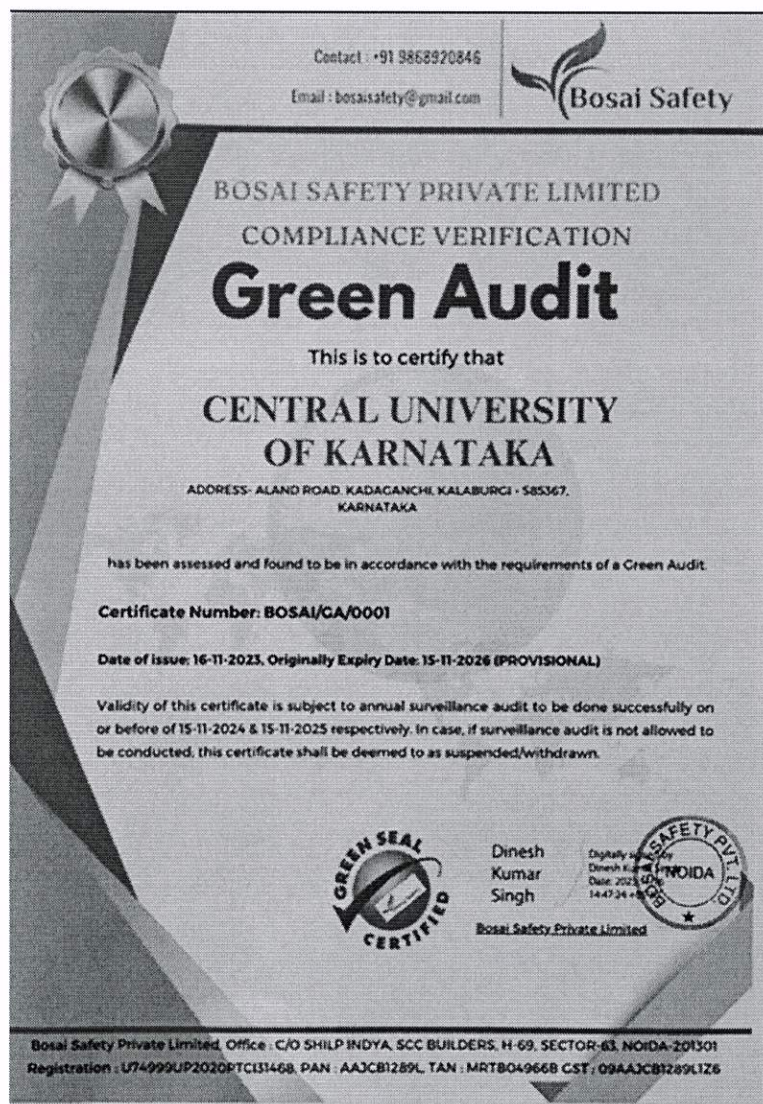
Variety of plants at CUK


कुलसचिव / REGISTRAR
कर्नाटक केन्द्रीय विश्वविद्यालय
Central University of Karnataka
कलबुरगी / KALABURAGI



Tree plantation measure taken by CUK.

B. H.
कुलसचिव / REGISTRAR
कर्नाटक केन्द्रीय विश्वविद्यालय
Central University of Karnataka
कलबुरगी / KALABURAGI



Flora found in the Central University of Karnataka Campus (2018 to 2023).

Sl. no.	Species Name	Common Name	Family	Habit
1	<i>Melothria scabra</i>	Cucamelon	Cucurbitaceae	climber
2	<i>Melothria pendula</i>	Creeping-cucumber	Cucurbitaceae	Climbing shrub
3	<i>Abutilon indicum</i>	Monkey bush	Malvaceae	Herb
4	<i>Agave angustifolia</i>	Variegated caribbean agave	Agavaceae	Herb
5	<i>Agave vilmoriniala</i>	Agave	Asparagaceae	Herb
6	<i>Agermone maxicana</i>	Mexican poppy	Papaveraceae	Herb
7	<i>Alternanthera sessilis</i>	Brazilian spinach	Amaranthaceae	Herb
8	<i>Andrographis echiodides</i>	False water willow	Acanathaceae	Herb
9	<i>Boerhavia erecta</i>	Erect spiderling	Nyctaginaceae	Herb
10	<i>Calendula arvensis</i>	Field marry gold	Asteraceae	Herb
11	<i>Cassia occidentalis</i>	Coffee Weed	Fabaceae	Herb

REGISTRAR
कुलसचिव / REGISTRAR
के. कर्नाटक केन्द्रीय विश्वविद्यालय
Central University of Karnataka
कलबुर्गी / KALABURAGI

12	<i>Cassia sericea</i>	oneleaf senna	Fabaceae	Herb
13	<i>Cassia sophora</i>	Kasondi Senna	Fabaceae	Herb
14	<i>Cassia tora</i>	Pawad	Fabaceae	Herb
15	<i>Clitoria ternatea</i>	Butterfly pea	Fabaceae	Herb
16	<i>Crassula ovata</i>	Jade plant	Crassulaceae	Herb
17	<i>Crotalaria hebecarpa</i>	Fuzzy fruited rattlepod	Fabaceae	Herb
18	<i>Croton bonplandianus</i>	Ban tulsi	Euphorbiaceae	Herb
19	<i>Curcuma longa</i>	haldi	Zingiberaceae	Herb
20	<i>Cyanthillium albicans</i>	Western ghats vernonia	Asteraceae	Herb
21	<i>Cyanthillium cinereum</i>	Little ironweed	Asteraceae	Herb
22	<i>Cymbopogon citratus</i>	Lemon grass	Gramineae	Herb
23	<i>Dactyloctenium aegyptium</i>	Durban crowfoot	Poaceae	Herb
24	<i>Eragrostis uniolooides</i>	Chinese love grass	Poaceae	Herb
25	<i>Erigeron canadensis</i>	Horseweed	Asteraceae	Herb
26	<i>Euphorbia hirta</i>	Asthma plant	Euphorbiaceae	Herb
27	<i>Gaillardia pulchella Foug.</i>	Indian blanket	Asteraceae	Herb
28	<i>Gomphrena globosa</i>	Bachelor's-button	Amaranthaceae	Herb
29	<i>Heteropogon contortus</i>	Black spear grass	Poaceae	Herb
30	<i>Impatiens balsamina L.</i>	Balsam	Balsaminaceae	Herb
31	<i>Indigofera cordifolia</i>	Heart-leaf indigo	Fabaceae	Herb
32	<i>Indigofera linifolia</i>	Narrow-leafed indigo	Fabaceae	Herb
33	<i>Ipomoea indica</i>	blue dawn flower	Convolvulaceae	Herb
34	<i>Ipomoea obscura</i>	Obscure morning glory	Convolvulaceae	Herb
35	<i>Ipomoea purpurea</i>	Morning Glory	Convolvulaceae	Herb
36	<i>Malva nicaeensis</i>	Mallow of nice	Malvaceae	Herb
37	<i>Ocimum tenuiflorum</i>	Holy basil	Liliaceae	Herb
38	<i>Pennisetum pedicellatum</i>	Desho grass	Poaceae	Herb
39	<i>Pentanema indicum</i>	Sonkadi	Asteraceae	Herb
40	<i>Pentas lanceolata</i>	Eyyprain starcluster	Rubiaceae	Herb
41	<i>Polygonum arenastrum</i>	Oval-leaf knotweed, door weed	Polygonaceae	Herb
42	<i>Pulicaria paludosa</i>	Spanish false fleabane	Asteraceae	Herb
43	<i>Senna uniflora</i>	Oneleaf senna	Fabaceae	Herb
44	<i>Sphagneticola trilobata</i>	Wedelia	Asteraceae	Herb
45	<i>Tagetes minuta</i>	Southern cone marry gold	Asteraceae	Herb
46	<i>Trachyspermum ammi</i>	Ajwain	Apiaceae	Herb
47	<i>Trandescantia spathacea</i>	Oyster plant	Commelinaceae	Herb
48	<i>Tribulus terrestris</i>	Goathead	Zygophyllaceae	Herb
49	<i>Trichodesma zeylanicum</i>	Cattle bush	Boraginaceae	Herb
50	<i>Tridax procumbens</i>	Coatbuttons	Asteraceae	Herb


कुलसचिव / REGISTRAR
केन्द्रीय विश्वविद्यालय
Central University of Karnataka
कलबुरगी / KALABURGI

51	<i>Xanthium orientale</i>	Common cocklebur	Asteraceae	Herb
52	<i>Xanthosoma sagittifolium</i>	Elephant ear	Araceae	Herb
53	<i>Xanthosoma violaceum</i>	Blue taro	Arecaceae	Herb
54	<i>Zingiber officinale</i>	Ginger	Zingiberaceae	Herb
55	<i>Ipomoea quamoclit</i>	Hummingbird vine	Convolvulaceae	Herb
56	<i>Themeda triandra</i>	Kangaroo grass	Poaceae	herb
57	<i>Chrysanthemum indicum</i>	Indian chrysanthemum	Asteraceae	Herb or Sub-shrub
58	<i>Tradescantia pallida</i>	Purple heart	Commelinaceae	herb-shrub
59	<i>Tradescantia spathacea</i>	Moses-in-the-cradle	Commelinaceae	herb-shrub
60	<i>Tradescantia zebrina</i>	Inchplant	Commelinaceae	herb-shrub
61	<i>Epipremnum aureum</i>	Money plant	Araceae	Herb-shrub
62	<i>Monstera ssp</i>	Monstera	Araceae	Herb-shrub
63	<i>Centella asiatica</i>	Bhrmhi	Apiaceae	Herm
64	<i>Ficus recemosa</i>	Cluster fig	Moraceae	Large Shrub
65	<i>Nerium oliander</i>	Oleander	Apocynaceae	Mounted shrub
66	<i>Solenostemon scutellarioides</i>	Beef steak plant	Lamiaceae	Perennial herb
67	<i>Euphorbia milli</i>	The crowns of thorns	Euphorbiaceae	Perennial shrub
68	<i>Kalachoe pinnata</i>	Cathedral bells	Crassulaceae	Perennial shrub
69	<i>Cryptostegia grandiflora</i>	Indian Rubber vine	Apocynaceae	Perennial-vine
70	<i>Cathranthus roseus</i>	Bright eyes nithya kalyani	Oleaceae	Semi-woody shrub
71	<i>Acalypha wilkesiana</i>	Copper leaf green	Euphorbiaceae	Shrub
72	<i>Achyranthus aspera</i>	Devil's horsewhip	Amaranthaceae	Shrub
73	<i>Aeschynomene indica</i>	Indian Joint vetch	Fabaceae	Shrub
74	<i>Annona squamosa</i>	Custard apple	Annonaceae	Shrub
75	<i>Azima tetracantha</i>	Bee sting bush	Salvadoraceae	Shrub
76	<i>Calotropis procera</i>	Giant milkweed	Asclepidaceae	Shrub
77	<i>Citrus limon</i>	Lemon	Rutaceae	Shrub
78	<i>Clerodendrum chinense</i>	Glory-bower	Lamiaceae	Shrub
79	<i>Codiaeum variegatum</i>	Garden croton	Euphorbiaceae	Shrub
80	<i>Codiaeum variegatum</i>	Variegated croton	Euphorbiaceae	Shrub
81	<i>Combretum indicum</i>	Rangoon creeper	Combretaceae	Shrub
82	<i>Dracaena trifasciata</i>	Snake plant	Asparagaceae	Shrub
83	<i>Duranta erecta</i>	Golden dewdrops	Verbenaceae	Shrub
84	<i>Euphorbia heterophylla</i>	Mexican Fire plant	Euphorbiaceae	Shrub
85	<i>Euphorbia tithymaloides</i>	Devil's backbone	Euphorbiaceae	Shrub
86	<i>Euphorbia tithymaloides</i>	Slipper flower	Euphorbiaceae	Shrub
87	<i>Hibiscus micranthus</i>	Tiny flower hibiscus	Malvaceae	Shrub
88	<i>Hibiscus phoeniceus</i>	Brazilian rosemallow	Malvaceae	Shrub
89	<i>ipomea batatas</i>	Sweet potato	Convolvulaceae	Shrub
90	<i>Kalanchoe pinnata</i>	Cathedral bells	Crassulaceae	Shrub


 कुलसचिव / REGISTRAR
 कर्नाटक केंद्रीय विश्वविद्यालय
 Central University of Karnataka
 कलबुर्गी / KALABURGI

91	<i>Lantana camara</i>	Spanish flag	Verbenaceae	Shrub
92	<i>Murraya koenigii</i>	Curry leaf	Rutaceae	Shrub
93	<i>Nyctanthes arbor-tristis</i>	Parijat	Oleaceae	Shrub
94	<i>Pongamia pinnata</i>	Indian beech	Fabaceae	Shrub
95	<i>Punica granatum</i>	Pomegranate	Lythraceae	Shrub
96	<i>Rosa chinesis</i>	Bengal rose	Rosaceae	Shrub
97	<i>Saccharum officinarum</i>	Sugar cane	Gramineae	Shrub
98	<i>Senna auriculata</i>	Avaram senna	Fabaceae	Shrub
99	<i>Solanum lycopersicum</i>	Tomato	solanaceae	Shrub
100	<i>Solanum melongena</i>	Baigun	solanaceae	Shrub
101	<i>Solanum tuberosum</i>	Potato	solanaceae	Shrub
102	<i>Tabernaemontana pandacaqui</i>	Windmill bush	Apocynaceae	Shrub
103	<i>Thuja occidentalis</i>	Arbovite	Cupressaceae	Shrub
104	<i>Adenium obesum</i>	Adenium	Apocynaceae	Shrub, tree
105	<i>Ipomoea carnea</i>	Behaya	Convolvulaceae	Shurb
106	<i>Ixora coccinea</i>	viruchi, kiskaara, kepale	Rubiaceae	Shurb
107	<i>Nerium oleander</i>	Nerium	Apocynaceae	Shurb
108	<i>Dracaena trifasciata</i>	Snake plant	Asparagaceae	Shurb
109	<i>Lablab purpureus</i>	Hyacinth bean	Fabaceae	Shurb
110	<i>Jathropha integrifolia</i>	Peregrina	Euphorbiaceae	Small tree
111	<i>Crossandra infundibuliformis</i>	Firecracker flower	Acanthaceae	Sub-shrub
112	<i>Datura innoxia</i>	Indian apple	Solanaceae	Sub-shrub
113	<i>Acacia dealbata</i>	Acacia	Fabaceae	Tree
114	<i>Acacia nilotica</i>	Acacia	Fabaceae	Tree
115	<i>Anacardium occidentale</i>	Cashew	Anacardiaceae	Tree
116	<i>Artocarpus heterophyllus</i>	Jackfruit	Moraceae	Tree
117	<i>Artocarpus heterophyllus</i>	Kathal, Jack fruit	Moraceae	Tree
118	<i>Azadirachta Indica</i>	Neem	Meliaceae.	Tree
119	<i>Bauhinia purpurea</i>	Kachnar	Fabaceae	Tree
120	<i>Bougainvillea ssp</i>	Paper flowe	Nyctaginaceae	Tree
121	<i>Caesalpinia pulcherrima</i>	Peacock Flower	Fabaceae	Tree
122	<i>Carica papaya</i>	Papaya	Caricaceae	Tree
123	<i>Cascabela Thevetica</i>	Kaner	Apocynaceae	Tree
124	<i>Casia</i>			Tree
125	<i>Cassia fistula</i>	Golden shower	Fabaceae	Tree
126	<i>Conocarpus erectus</i>	Button wood	Combretaceae	Tree
127	<i>Cycus revoluta</i>	Saggo	Cycadaceae	Tree
128	<i>Dalbergia sissoo</i>	Shisham	Fabaceae	Tree
129	<i>Delonix regia</i>	Gulmohar	Fabaceae	Tree
130	<i>Eucalyptus melliodora</i>	Eucalyptus	Myrtaceae	Tree
131	<i>Ficus benghalis</i>	Banyan tree	Moraceae	Tree


 कुलसचिव / REGISTRAR
 कर्नाटक केन्द्रीय विश्वविद्यालय
 Central University of Karnataka
 कलबुर्गी / KALABURAGI

132	<i>Ficus benjamina</i>	Weeping fig	Moraceae	Tree
133	<i>Ficus carica</i>	Anjeer	Moraceae	Tree
134	<i>Ficus religiosa</i>	Peepal	Moraceae	Tree
135	<i>Hedyscepe canterburyana</i>	Umbrella palm	Aracaceae	Tree
136	<i>Hibiscus rosa-sinensis</i>	Orhul	Malavaceae	Tree
137	<i>Leucaena leucocephala</i>	River tamarind	Fabaceae	Tree
138	<i>Livistona chinensis</i>	Fountain palm	Arecaceae	Tree
139	<i>Mangifera Indica</i>	Mango	Anacardiaceae	Tree
140	<i>Manilkara Zapota</i>	Sapodilla	Sapotaceae	Tree
141	<i>Manilkara zapota</i>	Sapota, chiku	Sapotaceae	Tree
142	<i>Millingtonia hortensis</i>	Indian cook tree	Bigmoniaceae	Tree
143	<i>Monoon longifolia</i>	False ashoka	Annonaceae	Tree
144	<i>Peltophorum pterocarpum</i>	Copper Shower pod	Fabaceae	Tree
145	<i>Phoenix dactylifera</i>	Date palm	Arecaceae	Tree
146	<i>Platycladus orientalis</i>	Morpankhi	Cupressaceae	Tree
147	<i>Psidium Guajava</i>	Guava	Myrtaceae	Tree
148	<i>Ravenala madagascariensis</i>	East-west palm	Aracaceae	Tree
149	<i>Senegalia chundra</i>	Red cutch tree	Mimosaceae	Tree
150	<i>Senna multiglandulosa</i>	Glandular senna	Fabaceae	Tree
151	<i>Strelitziaceae</i>	Bird of paradise	Zingiberaceae	Tree
152	<i>Swietenia mahagoni</i>	mahogany	Meliaceae	Tree
153	<i>Syzygium cumini</i>	Blackberry	Myrtaceae	Tree
154	<i>Tectona grandis</i>	Teak	Lamiaceae	Tree
155	<i>Tectona grandis</i>	Teak wood	Lamiaceae	Tree
156	<i>Vachellia farnesiana</i>	Needle bush	Fabaceae	Tree
157	<i>Vachellia nilotica</i>	Gum arabic tree	Fabaceae	Tree
158	<i>Vachellia tortilis</i>	Umbrella thorn	Fabaceae	Tree
159	<i>Ziziphus mauritiana</i>	Jujube	Rhamnaceae	Tree
160	<i>Ziziphus mauritiana</i>	Ber	Meliaceae	Tree
161	<i>Heteropogon triticeus</i>	Giant spear grass	Cyperaceae	Tussock grass

Fauna found in the Central University of Karnataka Campus (2018 to 2023)

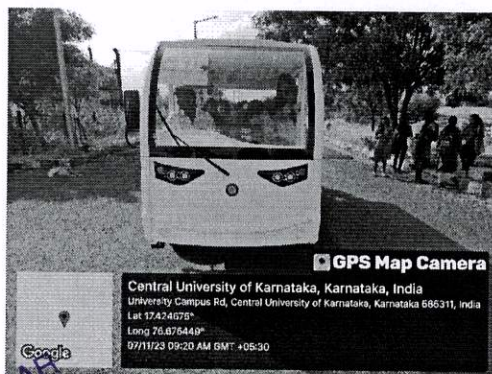
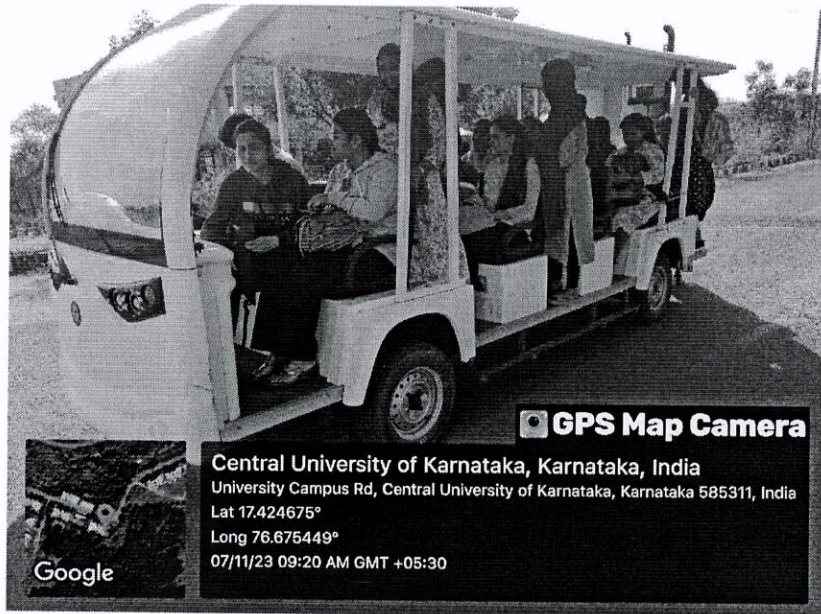
Genus	Species	Family	Common name
<i>Psittacula</i>	<i>krameri</i>	Psittadidae	Rose-ringed parakeet
<i>Dendrocitta</i>	<i>vagabunda</i>	Corvidae	Tree Pie
<i>Sturnus</i>	<i>pagodarum</i>	Sturnidae	Brahminy Myna


 कुलसचिव / REGISTRAR
 कर्नाटक केन्द्रीय विश्वविद्यालय
 Central University of Karnataka
 कलबुर्गी / KALABURAGI

<i>Dicrurus</i>	<i>macrocerus</i>	Dicruridae	Black Drongo
<i>Turdoides</i>	<i>striata</i>	Leiothrichidae	Jungle babbler
<i>Pavo</i>	<i>cristatus</i>	Phasianidae	Common peafowl
<i>Haliastur</i>	<i>indus</i>	Accipitridae	Brahminy Kite
<i>Columba</i>	<i>livia</i>	Columbidae	Blue Rock-Pigeon
<i>Spilopelia</i>	<i>senegalensis</i>	Columbidae	Laughing Dove
<i>Cinnyris</i>	<i>asiaticus</i>	Nectariniidae	Purple Sunbird
<i>Halcyon</i>	<i>smyrnensis</i>	Alcedinidae	White throated Kingfisher
<i>Copsychus</i>	<i>saularis</i>	Muscicapidae	Magpie Robin
<i>Pycnonotus</i>	<i>cafe</i>	Pycnonotidae	Red Vented bulbul
<i>Ardea</i>	<i>alba</i>	Ardeidae	Great Egret
<i>Merops</i>	<i>orientalis</i>	Meropidae	Asian green bee eater
<i>Ardeola</i>	<i>ralloides</i>	Ardeidae	Pond Heron

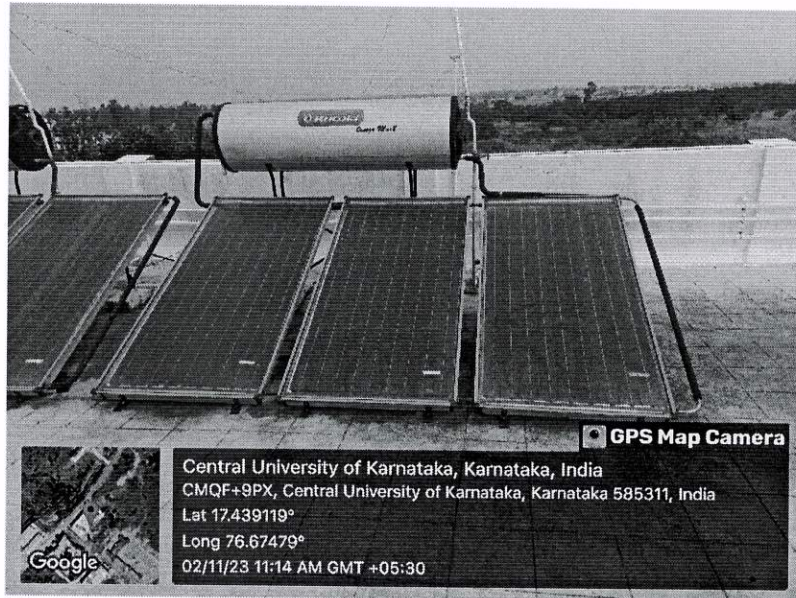
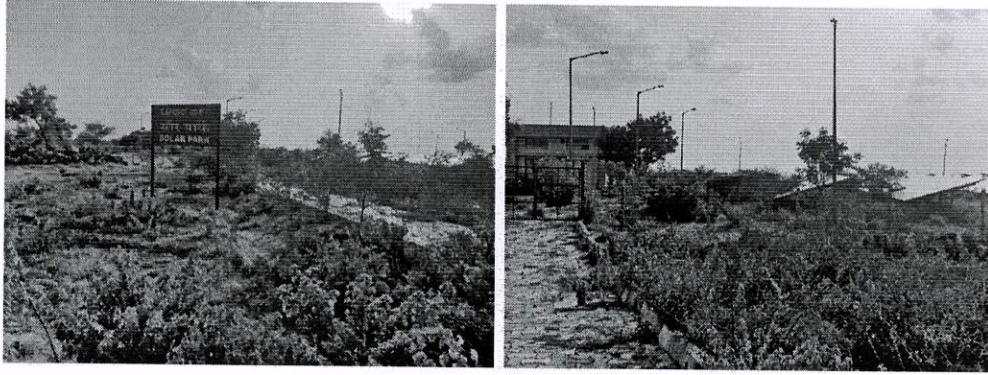

 कुलसचिव / REGISTRAR
 कर्नाटक केन्द्रीय विश्वविद्यालय
 Central University of Karnataka
 कलबुरगि / KALABURAGI

- Battery operated vehicles:

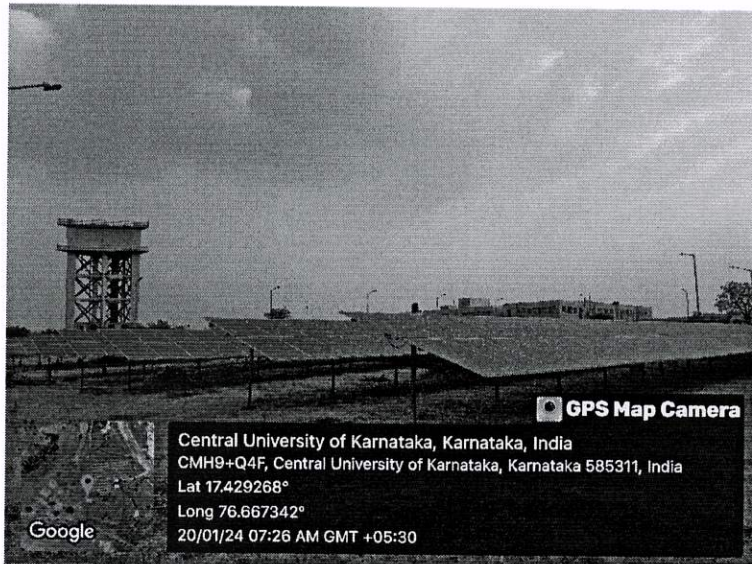


B. S. S.
 कुलसचिव / REGISTRAR
 कर्नाटक केन्द्रीय विश्वविद्यालय
 Central University of Karnataka
 कलबुरगी / KALABURGI

- **Solar Park, biofuel unit for harvesting/generating the energy:**



Solar Panel at Ladies Hostel




 कुलसचिव / REGISTRAR
 कर्नाटक केन्द्रीय विश्वविद्यालय
 Central University of Karnataka
 कलबुर्गी / KALABURAGI

Solar Park at CUK

 ಕರ್ನಾಟಕ ಕೇಂದ್ರೀಯ ವಿಶ್ವವಿದ್ಯಾಲಯ ಕರ್ನಾಟಕ ಕೇಂದ್ರೀಯ ವಿಶ್ವವಿದ್ಯಾಲಯ
CENTRAL UNIVERSITY OF KARNATAKA
Kadaganchi, Aland Road, Kalaburagi - 585 367
**CENTRE FOR INFORMATION AND DEMONSTRATION
OF BIOFUEL PRODUCTION AND RESEARCH**
In association with
DHAN FOUNDATION, KALABURAGI

Workshop for farmers on Biofuel production
ಜೈವಿಕ ಇಂಧನ ಉತ್ಪಾದನೆ ಸುಲಭ ಮತ್ತು ದೈನಂದಿನ ಒಂದು ದಿನದ ಕಾರ್ಯಾಗಾರ

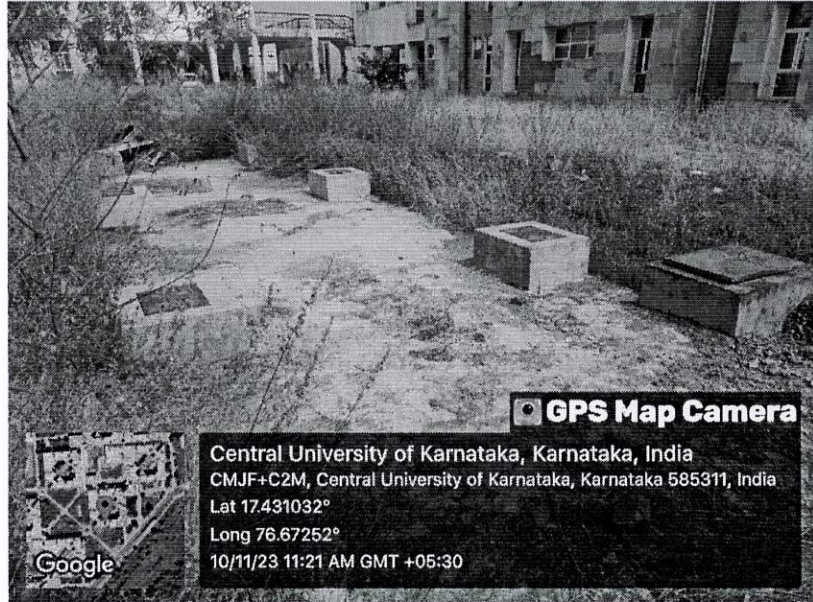
Venue : Centre for Information and Demonstration of Biofuel Production and Research
On 29-08-2016 at 10-00 am

ALL ARE CORDIALLY WELCOME


REGISTRAR
ಕರ್ನಾಟಕ ಕೇಂದ್ರೀಯ ವಿಶ್ವವಿದ್ಯಾಲಯ
Central University of Karnataka
ಕಲಬುರಗಿ / KALABURAGI

- Water conservation:

Rain Water Recharge Structure

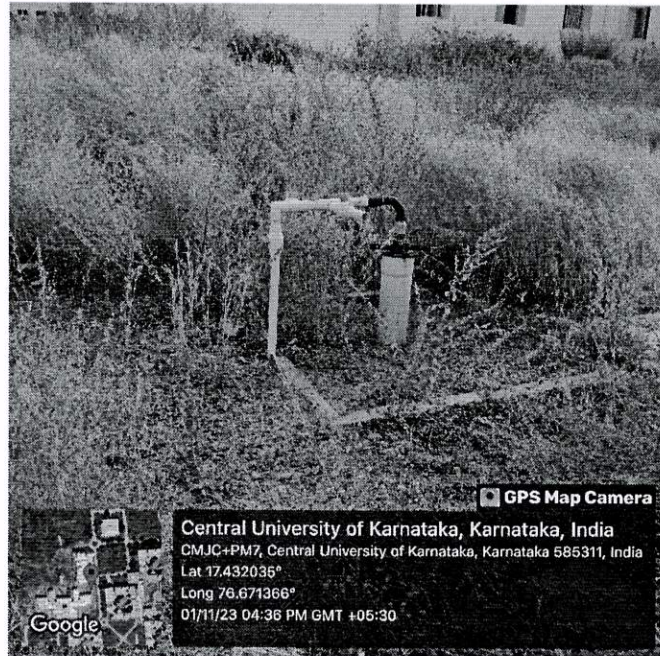
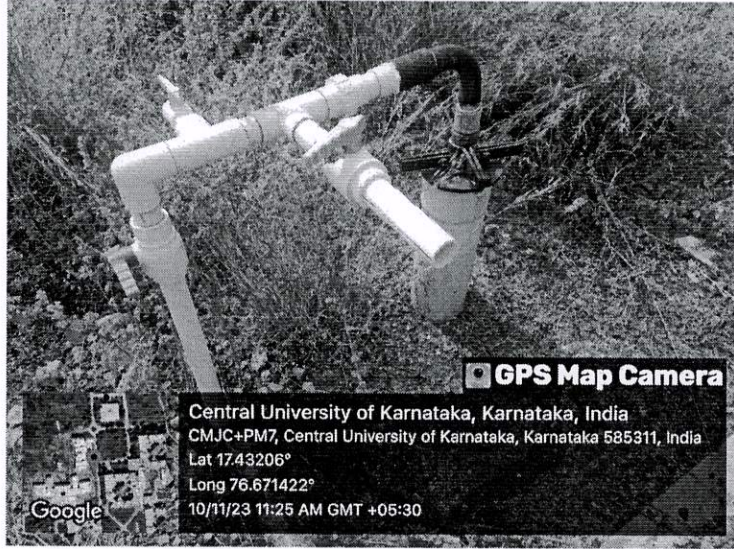


WATERSHED (Trench) ACTIVITIES ON THE CUK CAMPUS



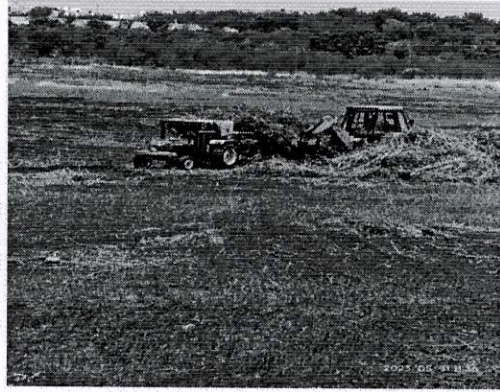
B. H.
कुलसचिव / REGISTRAR
कर्नाटक केन्द्रीय विश्वविद्यालय
Central University of Karnataka
कलबुरगी / KALABURAGI

Bore well recharge

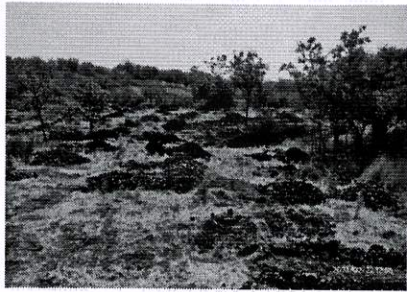



कुलसचिव / REGISTRAR
कर्नाटक केन्द्रीय विश्वविद्यालय
Central University of Karnataka
कलबुरगी / KALABURGI

- **Maintaining natural watery bodies:**



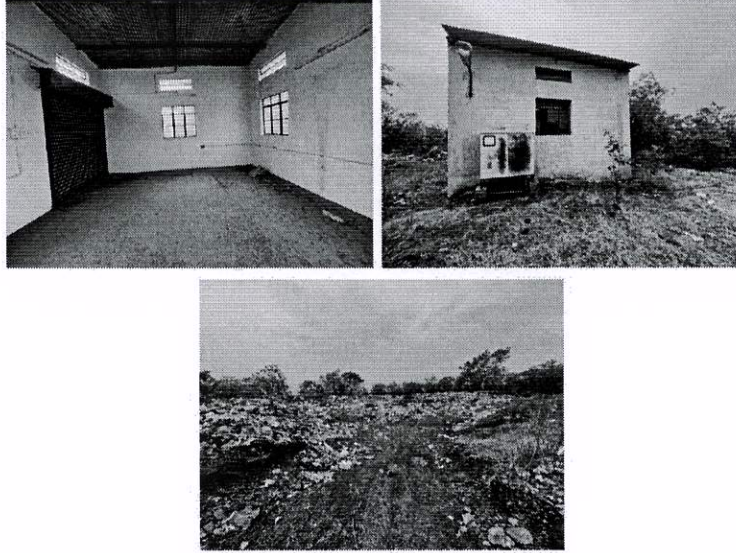
Rejuvenating of Pond



Land Treatment Pits for Water Bodies and Plantation

Bth
कुलसचिव / REGISTRAR
कर्नाटक केन्द्रीय विश्वविद्यालय
Central University of Karnataka
कलबुरगी / KALABURAGI

- Waste disposal:



Solid Waste Management Dumping yard


कुलसचिव / REGISTRAR
कर्नाटक केन्द्रीय विश्वविद्यालय
Central University of Karnataka
कलबुरगि / KALABURAGI

- Disposal of e-waste and old/unusable items:



Non-working CPUs and cartridges has been stored in the E-waste yard



Non-working CPU bodies, CPUs and cartridges has been stored in the E-waste yard.


कुलसचिव / REGISTRAR
के.के.के. कर्नाटक केन्द्रीय विश्वविद्यालय
Central University of Karnataka
कलबुरगी / KALABURAGI